

# THE WESTERN PACIFIC RAILROAD GOING AROUND THE BIG BEND

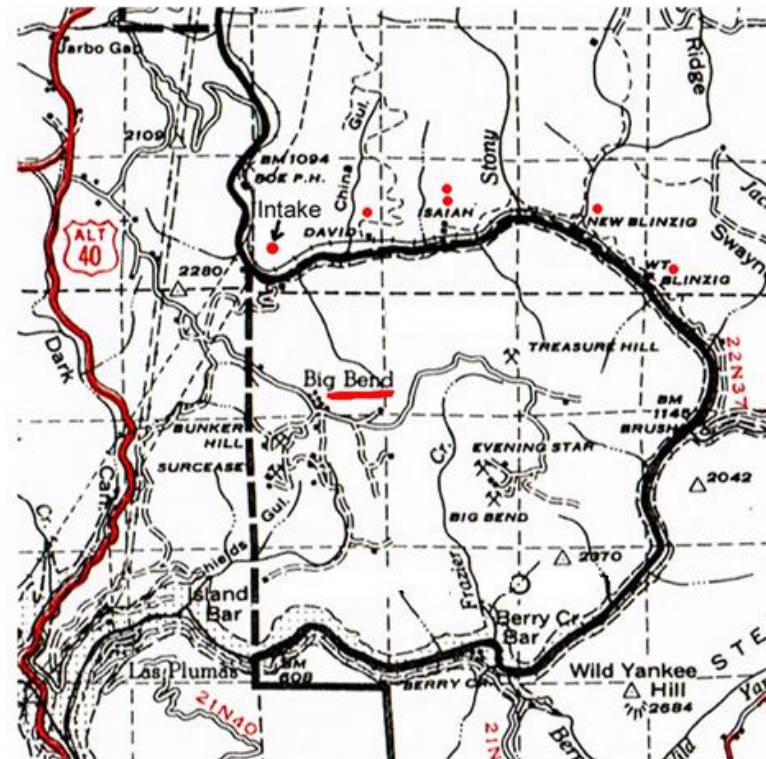
PHOTOS BY JIM LEKAS, JEFF PELL AND K. MEEKER TAKEN FROM 1950 TO 1990  
TAKEN BEFORE AND AFTER THE CREATION OF LAKE OROVILLE WHICH RESULTED  
IN THE RAILS BEING RELOCATED.

SUPPLEMENTED WITH PHOTOS FROM THE YANKEE HILL HISTORICAL SOCIETY ARCHIVES

Photos of the old Western Pacific rail line around Big Bend which operated from 1905 until 1966 when the route was realigned with the creation of Lake Oroville. Photos show tunnels and track, before and after, that no longer existed by the 1970's.

Map below circa 1960

Photos by Jim Lekas, Jeff Pell and K. Meeker

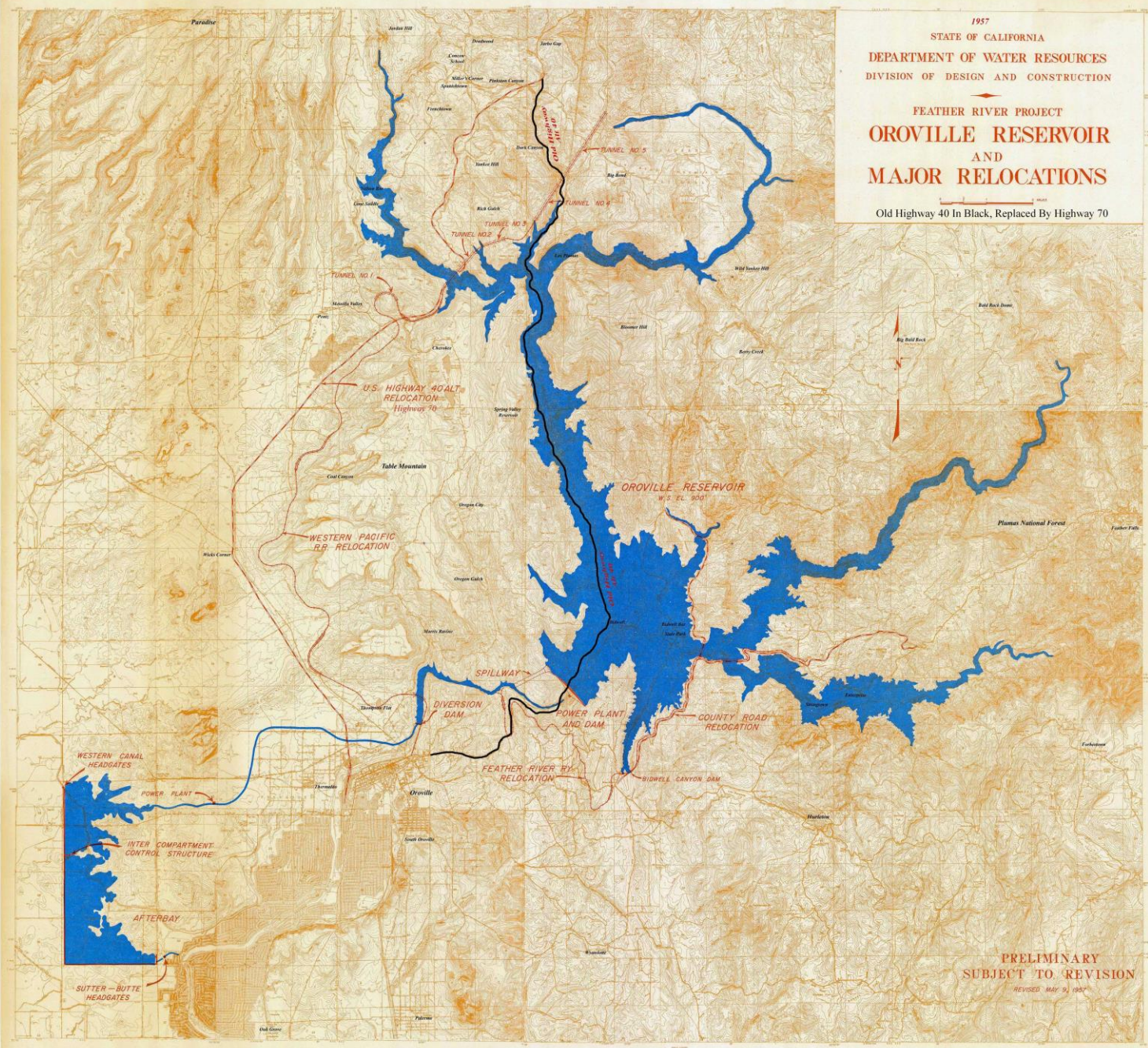


1957

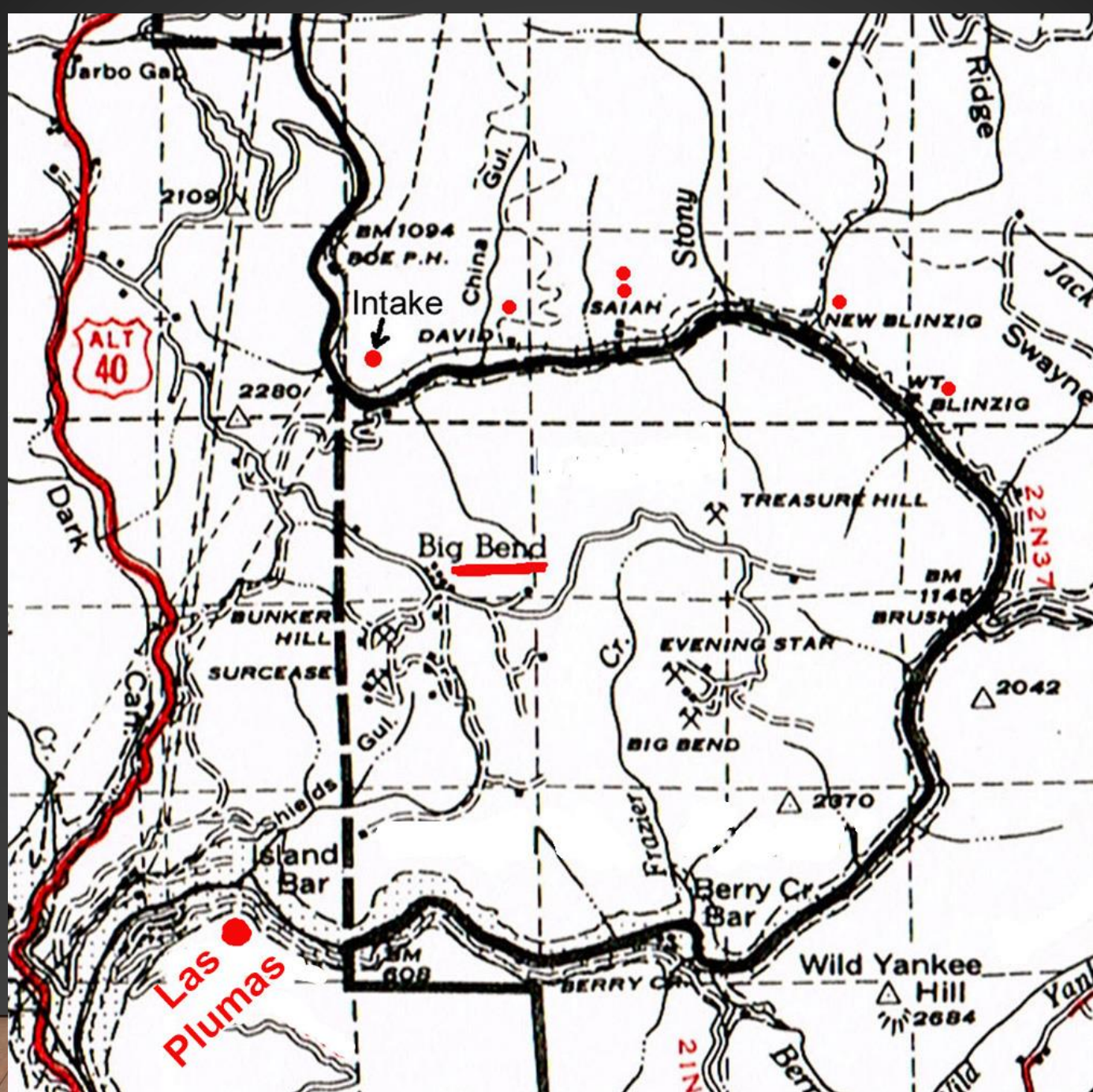
STATE OF CALIFORNIA  
DEPARTMENT OF WATER RESOURCES  
DIVISION OF DESIGN AND CONSTRUCTION

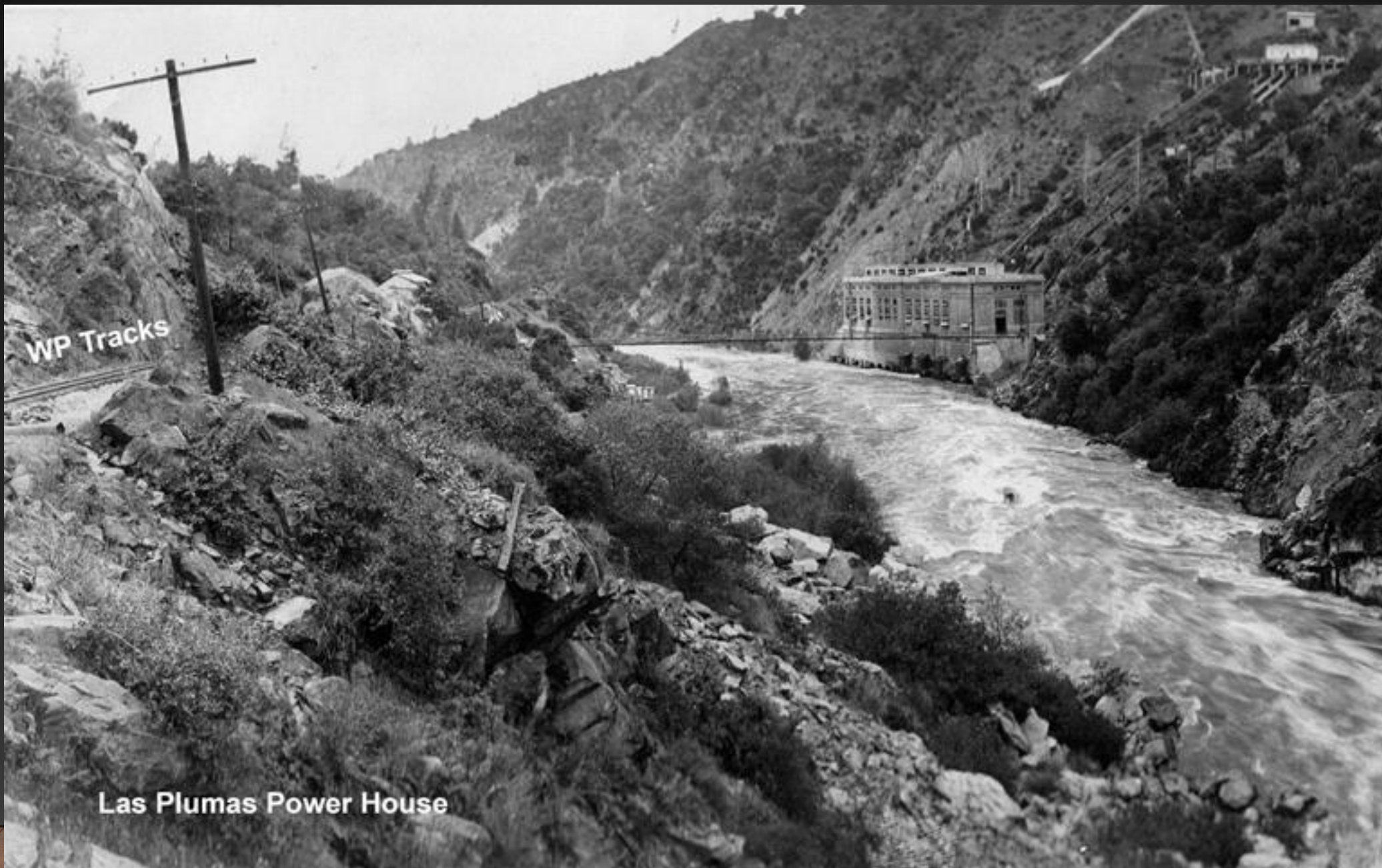
FEATHER RIVER PROJECT  
**OROVILLE RESERVOIR  
AND  
MAJOR RELOCATIONS**

Old Highway 40 In Black, Replaced By Highway 70



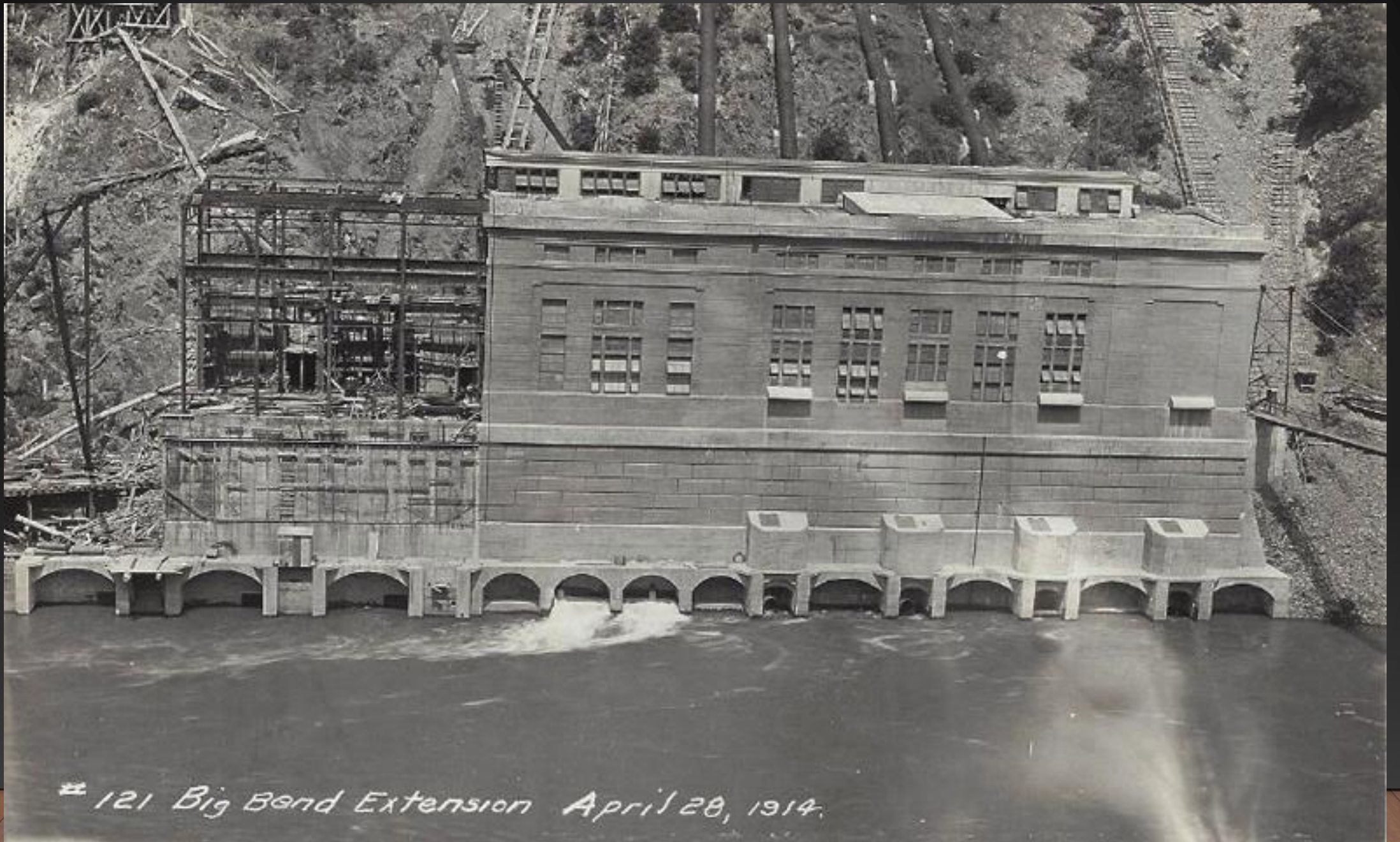
PRELIMINARY  
SUBJECT TO REVISION  
REVISED MAY 9, 1957



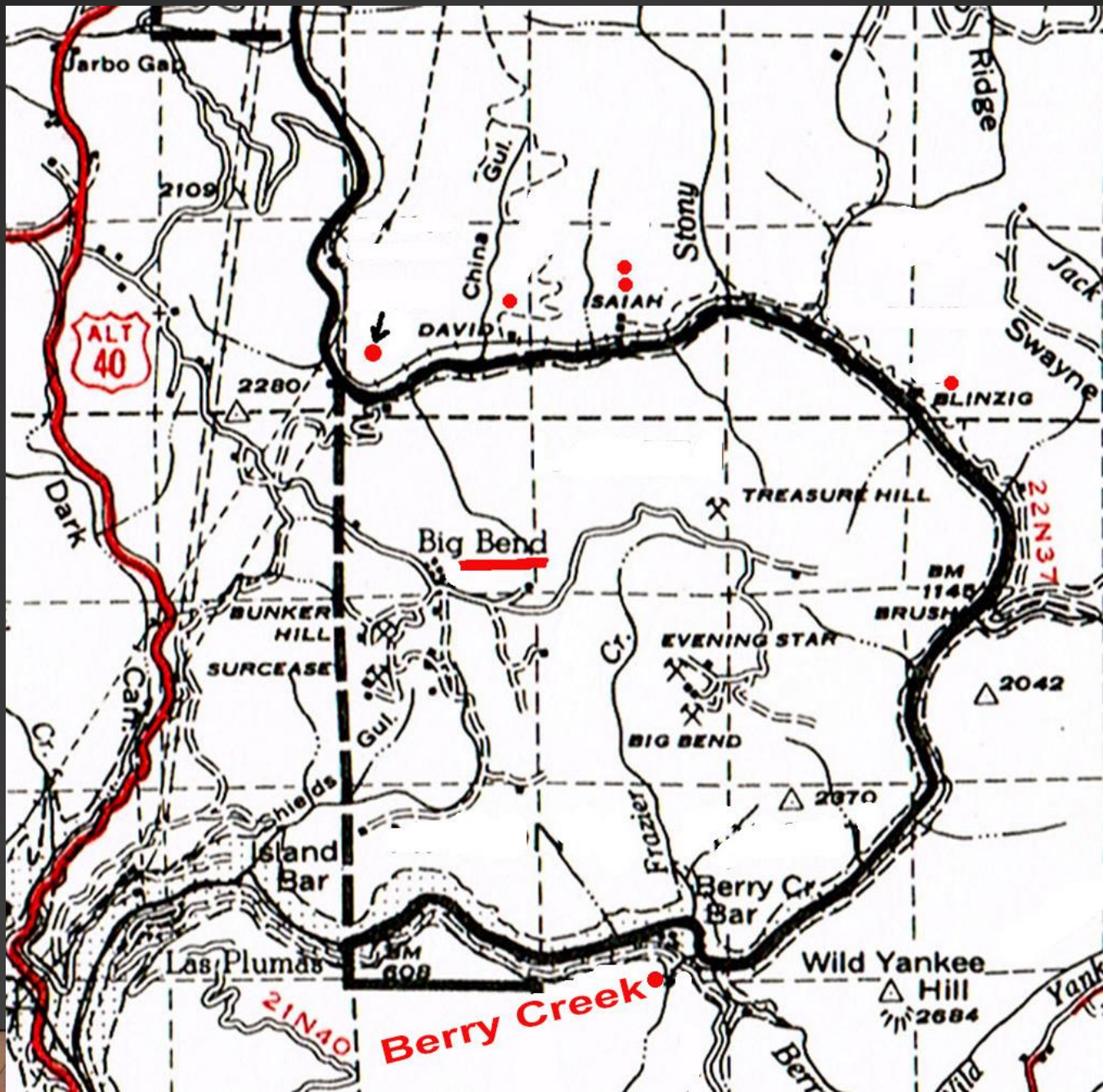


WP Tracks

Las Plumas Power House



# 121 Big Bend Extension April 28, 1914.





Berry Creek June 1965 W.P. Tunnel 6 J. Lekas





Berry Creek Sept 1977 W.P. Tunnel 6 J. Lekas

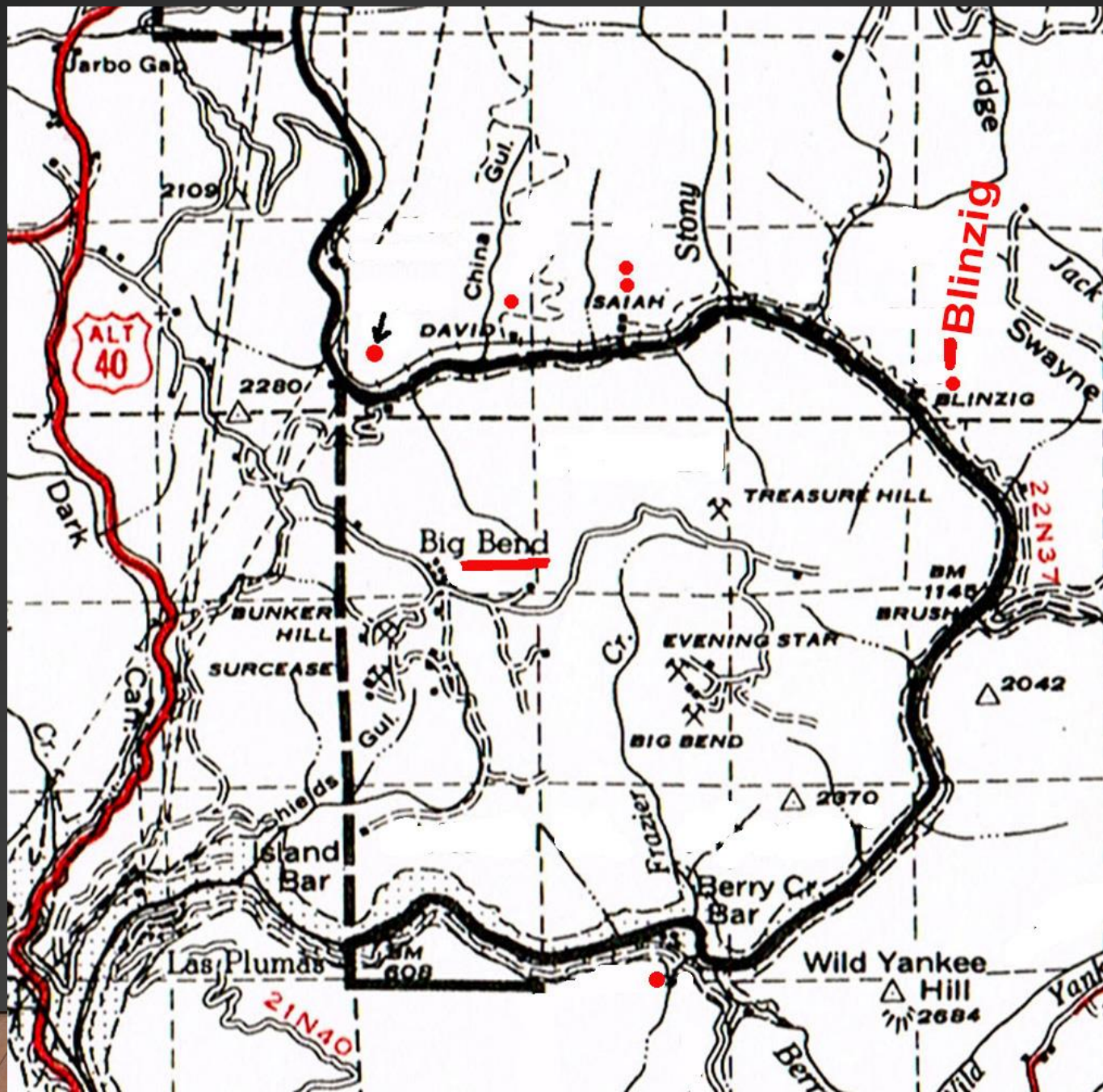


**Berry Creek Tunnel #6 June 1977**

**Photo by K. Meeker**



**Berry Creek Tunnel Nov 2007, Jeff Pell, Photographer in Photo**



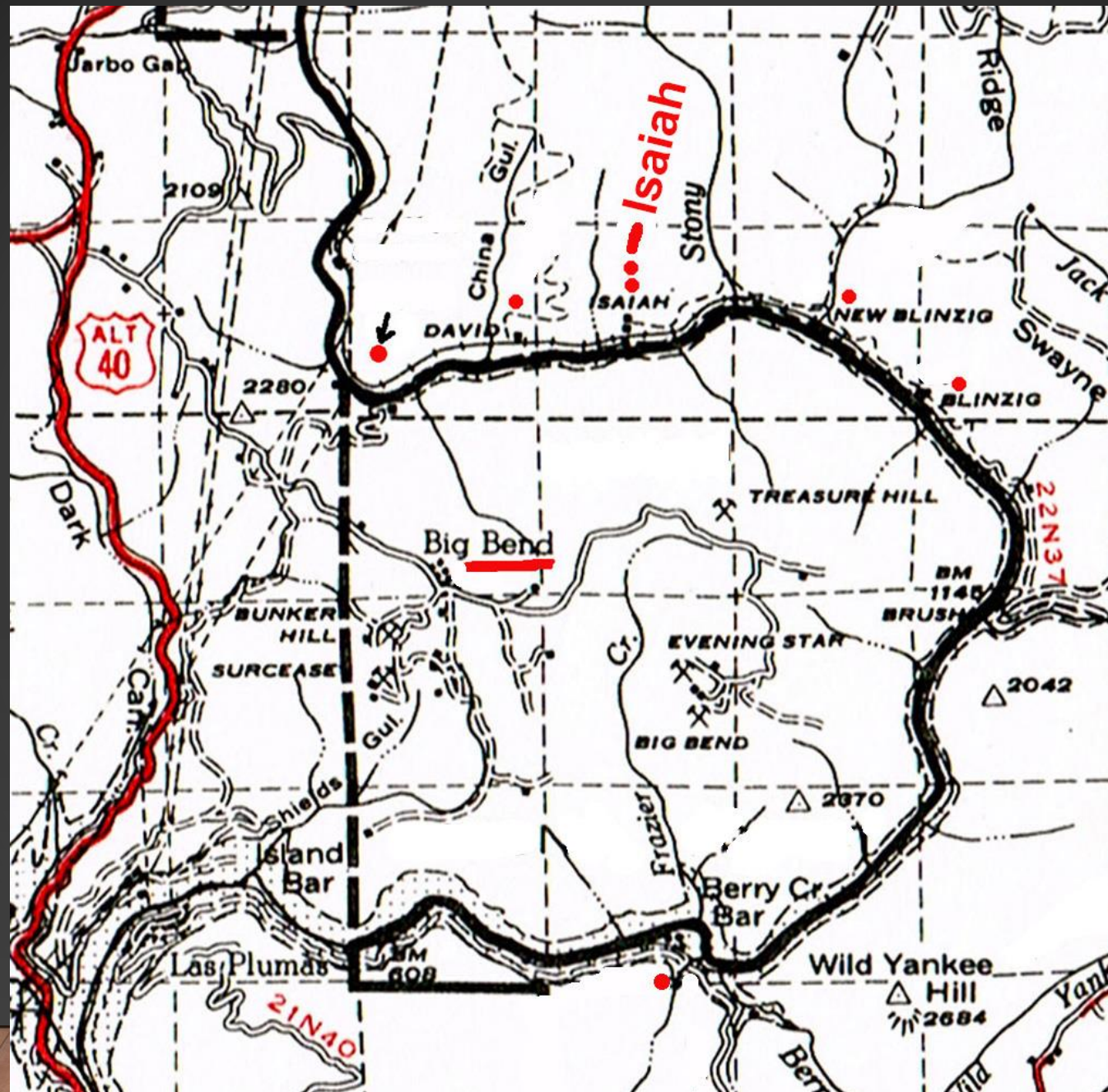


Blenzig 6-24-1962

J. Lekas



**Blenzig 7-17-1990**  
**Photos by Jim Lekas**





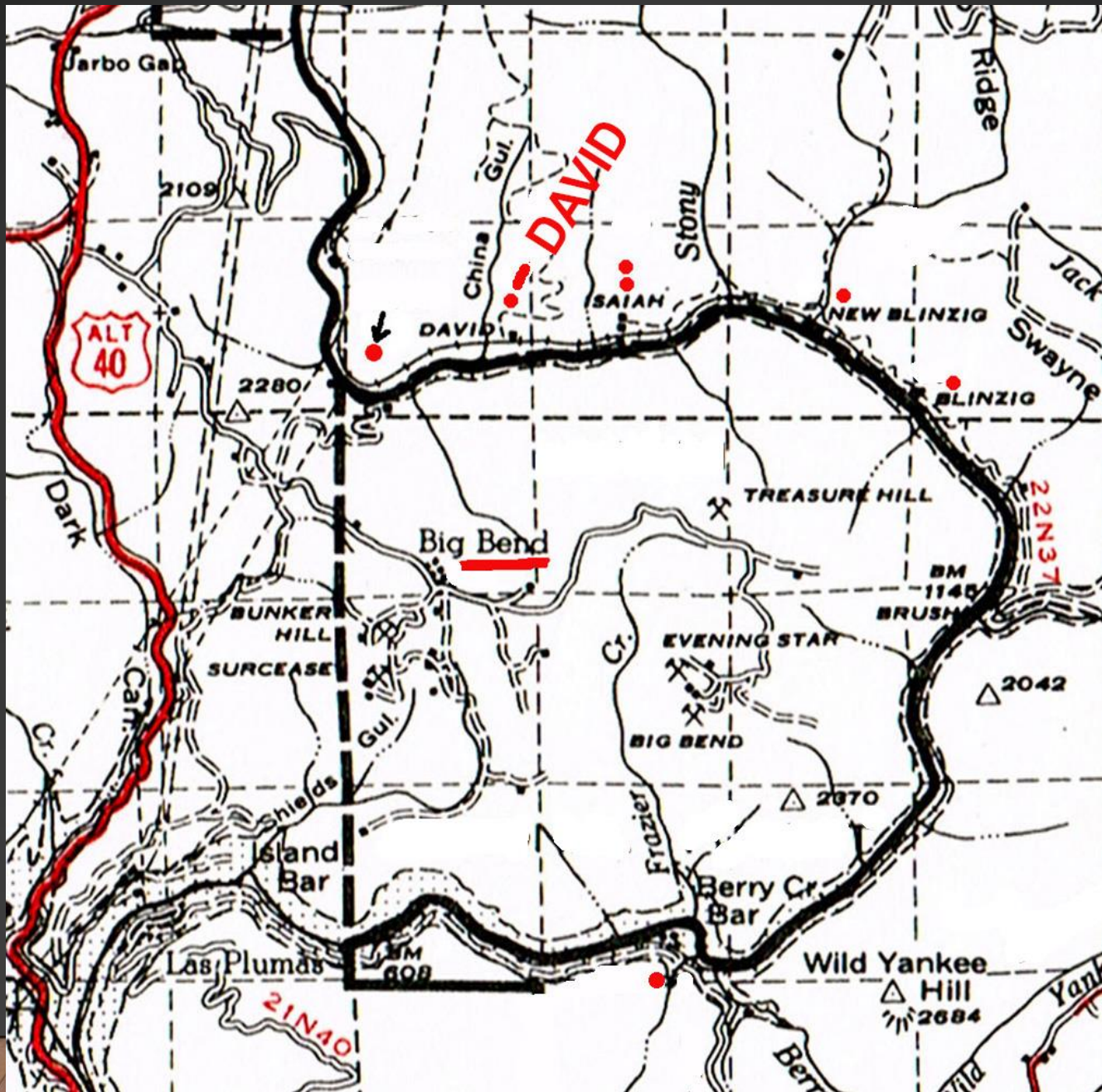
Isaiah 1957

See tram to move supplies up the hill





Isaiah 1962, tram going up the hill at right J Lekas





David 1953, Engine 805 J Lekas



David, Train 18 & 902-A, 8-10-1957 J. Lekas



West David 3-30-1962

J. Lekas



West David, Milepost 231 looking West 7-17-1990

J. Lekas



**West David, Train 17 No 804-A, 6-24-1962 J. Lekas**



**West David, The tracks are gone, only a cement base for old signal still there  
7-17-1990 photos by Jim Lekas**







Intake 1920's



J Lekas

The Intake for Big Bend Power House 1953



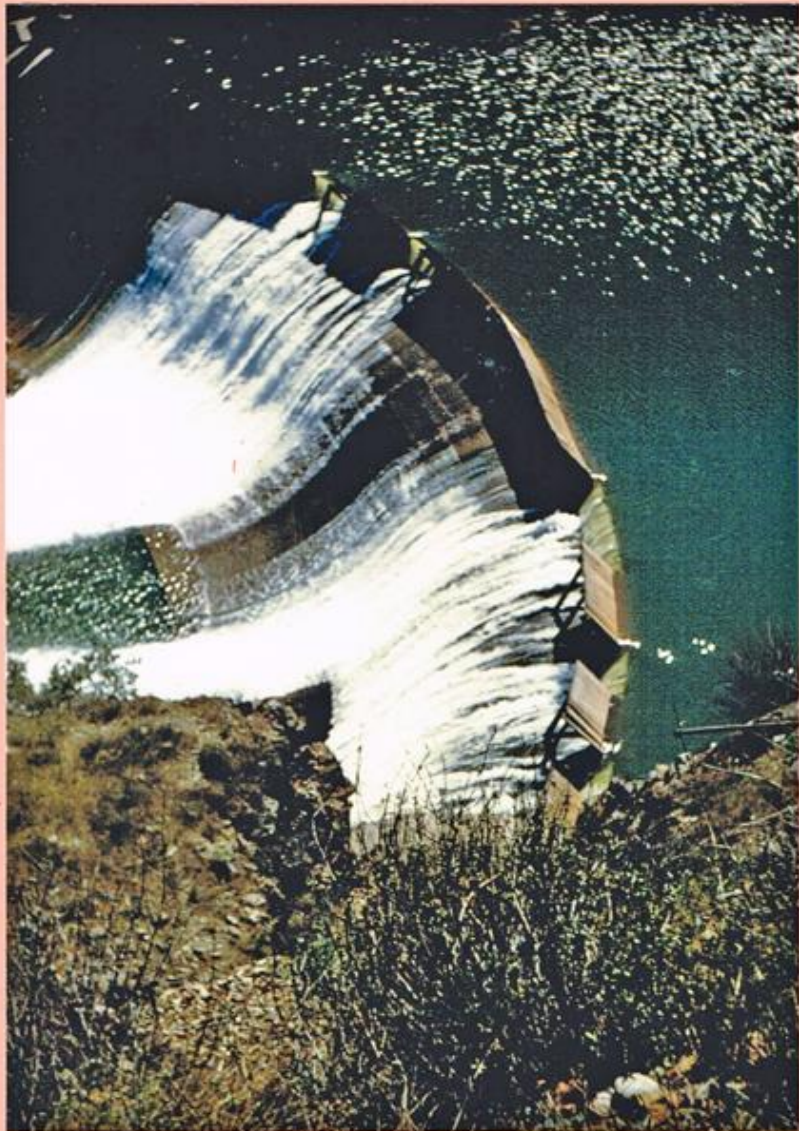
Intake 1962 see second sign at left

J Lekas

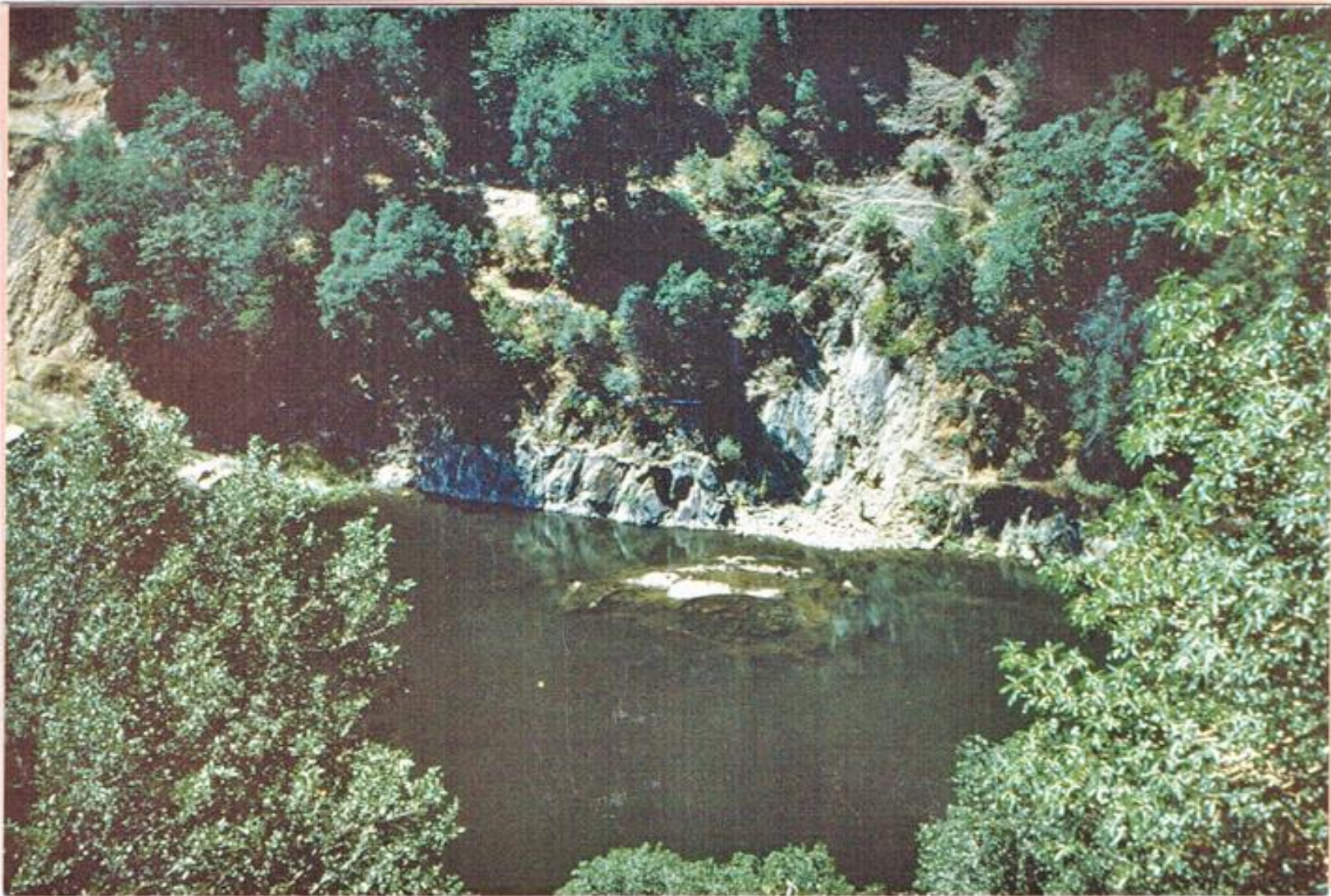


Intake, Ca 6-9-1961

J. Lekas



Intake Dam 3-27-1962 J. Lekas



J Lekas

The intake after the top was removed and filled with cement 8-21-1971







Tunnel #8 Looking West Aug 17, 1957

J. Lekas



**Tunnel #8 6-18-1965**

J. Lekas



**Tunnel #8 11-5-1977 Mile Post 226.9  
K. Meeker**



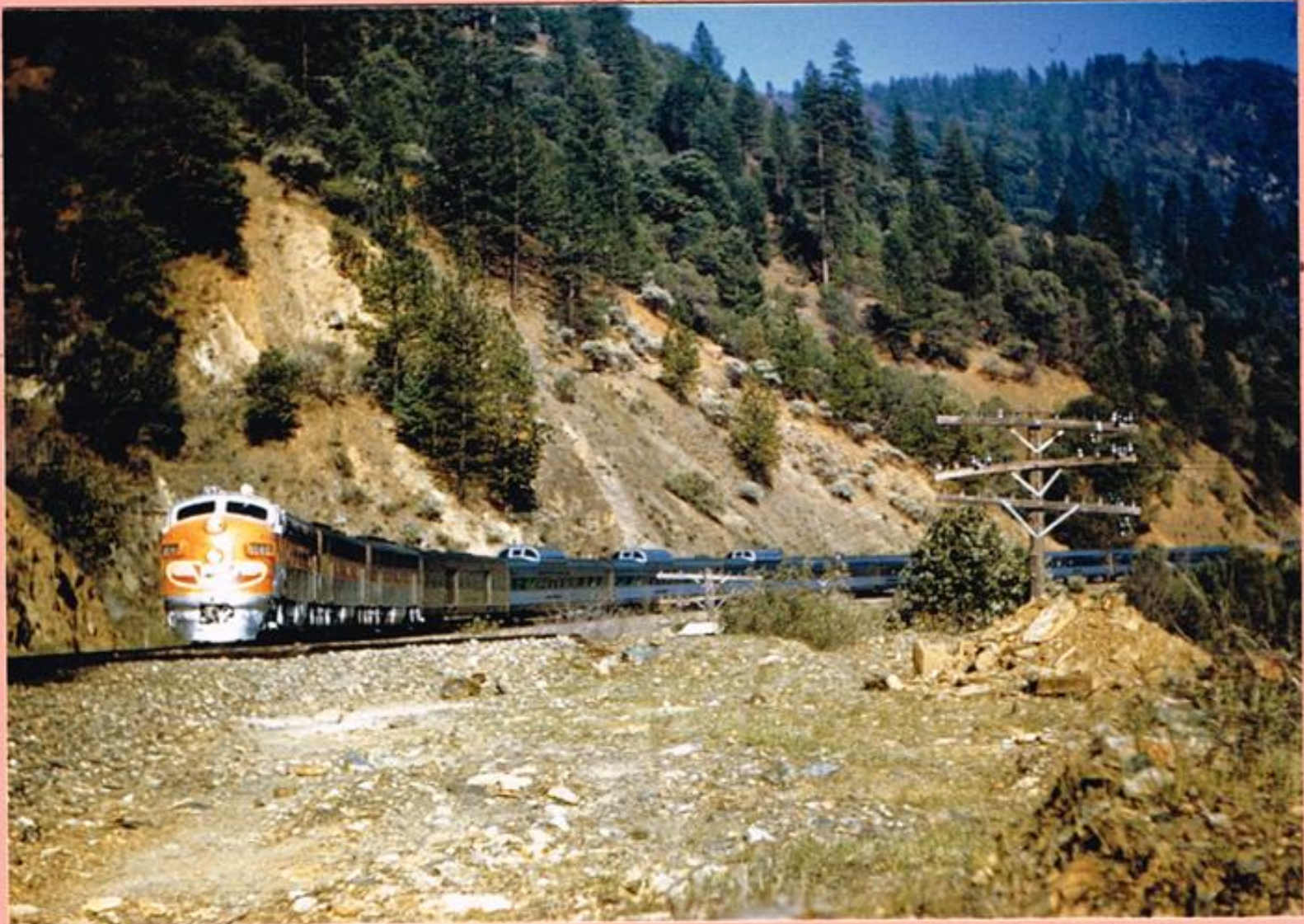
J. Lekas

**Near David, Oro-Keddie Local Train # 96 No 707  
8-23-1956, Now At Portola, Ca Train Museum**



J. Lekas

David 1962, Engine 805 - Now located at Portola Train Museum



J. Lekas

California Zephyr Train 804-D, Milepost 230 3-30-1962



Jim Lekas At David In July 1990