



Concow Dam built in 1924

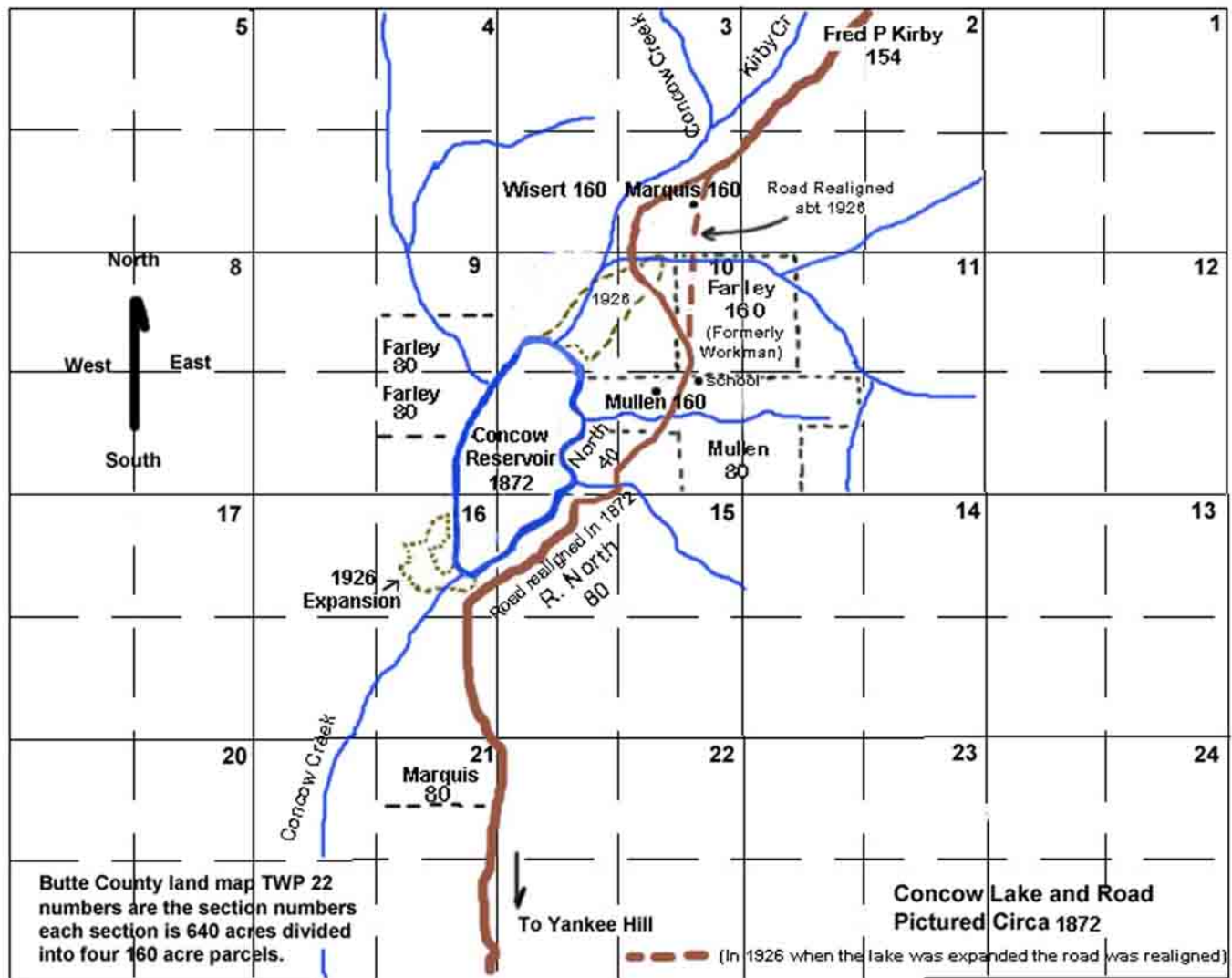
Concow Dam

YHHS Archives #P0026
www.yankeehillhistory.com



Concow Lake after the 2008 Lightning Fire

YHHS Archives #P0027
www.yankeehillhistory.com



YHHS Archives #P0028
www.yankeehillhistory.com



Hulbert Wright
Concow Cemetery

YHHS Archives #P0029
www.yankeehillhistory.com



Above is the Deadwood Sanatorium, date unknown, courtesy of Florence Styles. Below is a recent photo of the site of the sanatorium, courtesy of the author.



Photo Circa 1972 by Ramona Kimbrell



Edward Pinkston 1809-1893



YHHS Archives #P0031
www.yankeehillhistory.com



YHHS Archives #P0032
www.yankeehillhistory.com



Gerhard and Ellen Mary Sauer Tebbe

1832 - 1897

Died 1884



Gerhard Tebbe

YHHS Archives #P0033
www.yankeehillhistory.com

MESSILLA VALLEY SCHOOL



This picture was taken in about 1965 when we returned to the area with our children. I wanted them to see the school that I attended for all eight grades.

I was about six years old when we moved to Pentz. We lived in the back of our ranch for two years near the tailings of the old Cherokee Mine. My father, Joseph Grimshaw, was a citrus nurseryman and the sandy soil was perfect for starting the citrus cuttings. My brother, Charles Grimshaw, and I walked the mile to school in all kinds of weather. We also were the school janitors and arrived early to sweep, dust and start the fire in the pot-bellied stove in the center of the schoolroom.

Miss Alma Hesbol was our teacher for all those years. She enjoyed having her students perform in plays or to demonstrate a particular talent. When the enrollment dropped to four students she invited two children from Oroville to stay with her in order to keep the school going. Apparently there was a six student minimum at that time. Twenty-one students was the greatest number we had while we were there. Three sets of twins were part of the twenty-one and I remember an article in the paper with a picture of all of us.

YHHS Archives #P0034
www.yankeehillhistory.com



Pentz Hotel

YHHS Archives #P0035
www.yankeehillhistory.com



Rag Dump
Henderson home 1906

YHHS Archives #P0036
www.yankeehillhistory.com



Ramsey's Bar 1903

Dana Bailey

Clem Jones

YHHS Archives #P0037
www.yankeehillhistory.com



Ramsey's Bar Circa 1906

YHHS Archives #P0038
www.yankeehillhistory.com



Ramsey's Bar circa 1915

YHHS Archives #P0039
www.yankeehillhistory.com



Rufus North
Concow Cemetery

YHHS Archives #P0040
www.yankeehillhistory.com



Skeet & Florence Smith 1957

YHHS Archives #P0041
www.yankeehillhistory.com



Paradise Cemetery

YHHS Archives #P0042
www.yankeehillhistory.com



Surcease Mine Crew abt 1940

Back Row: ? , ? , Bill Messner, ? , ? , Gus Niccoli-Tunnel Sup, John Hoeffling-Owner, Al Jones

2nd Row: Charlie Morton, Bill Osborn, Johnny Laughlin, ? , ? , McClosky, Al Leslie, George Moak

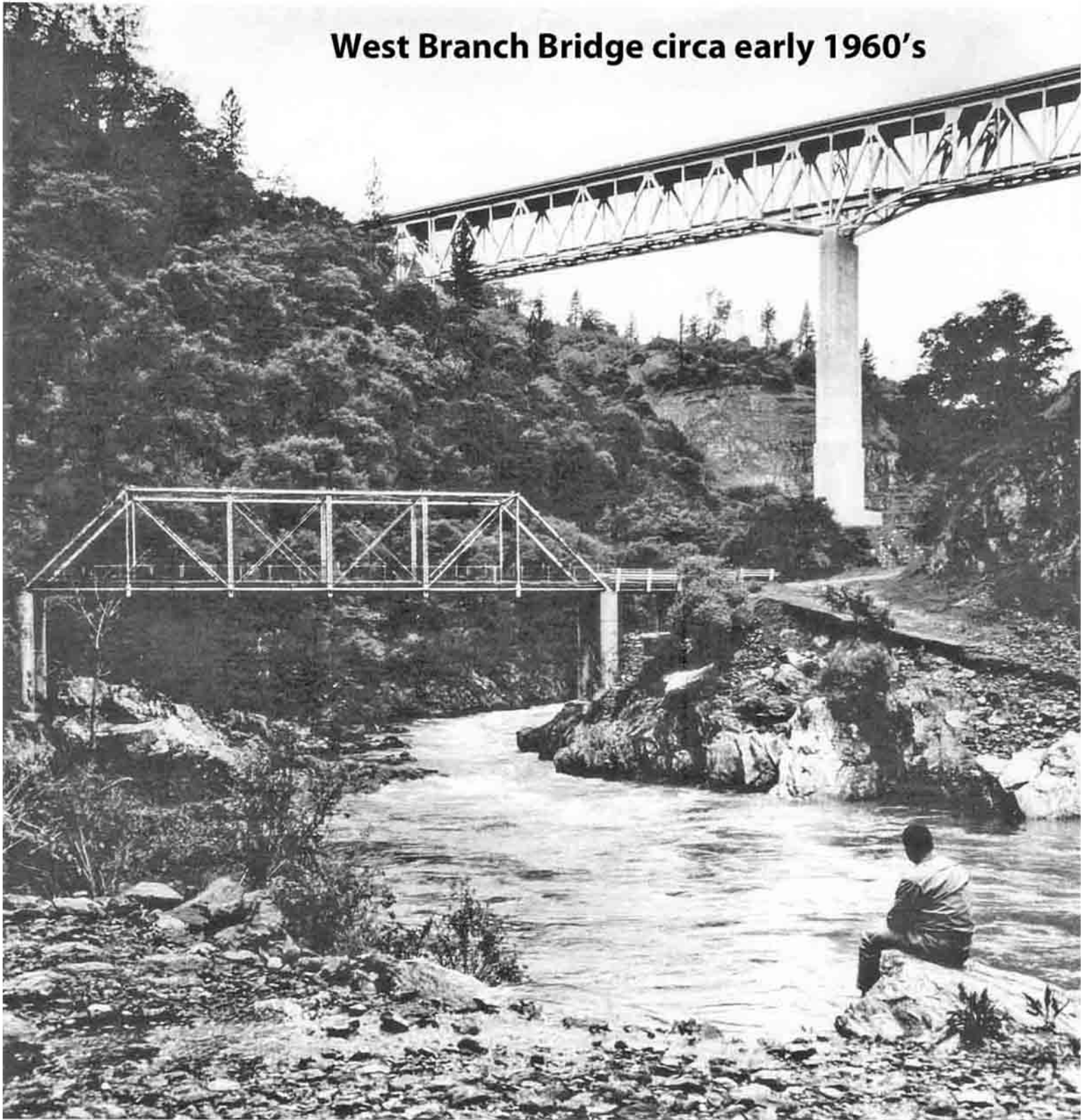
3rd Row: Jack, McGuiarie, Al Nobbs, Allan Upton, ? , Ambrose Hoeffling-Owner, Enos Brown, Dell Wright

Front Row: Leonard Beebe, ? , ? , Emil Wernsman, Bob Newman

YHHS Archives #P0043

www.yankeehillhistory.com

West Branch Bridge circa early 1960's



YHHS Archives #P0044
www.yankeehillhistory.com



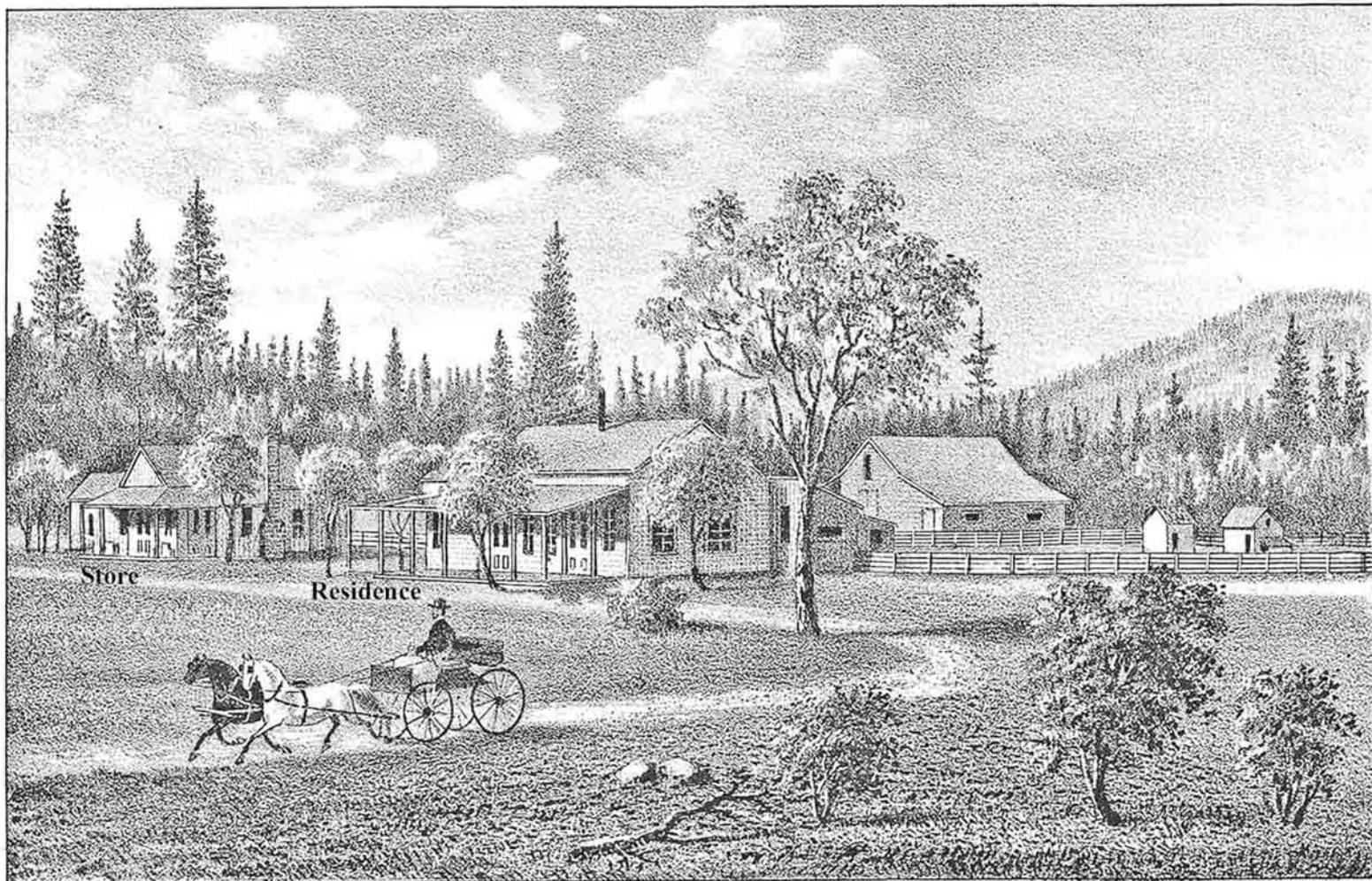
Oroville Cemetery

YHHS Archives #P0045
www.yankeehillhistory.com



Oroville Cemetery

YHHS Archives #P0046
www.yankeehillhistory.com



STORE AND RESIDENCE OF M.H.WELLS, in 1882
YANKEE HILL, BUTTE CO. CAL.

YHHS Archives #P0047
www.yankeehillhistory.com



Yankee Hill Hotel and Wells Home Circa 1920

*The hotel built in 1883 is on the left. The old hotel is on the right
Living quarters were located upstairs. A dining hall was located below.*



***Yankee Hill Store and bar located across the street from the hotel.
Wells home shown in the 1882 sketch was located to the right***

YHHS Archives #P0048
www.yankeehillhistory.com



TAKEN IN 1936

BACK
ROW-R

HAZEL
CROGHAN
ZELMA

CLIFFORD
BESSIE
BUTTE

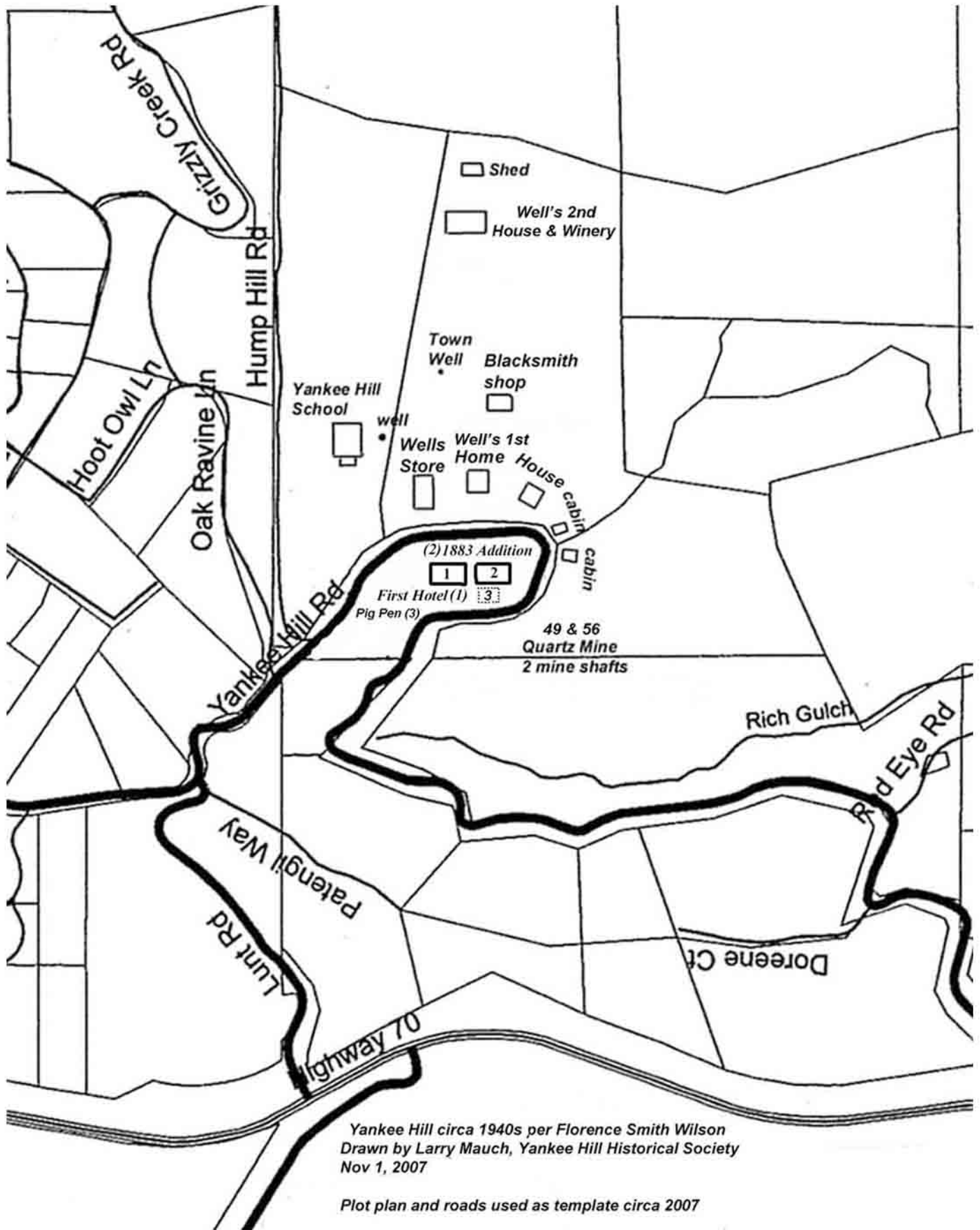


FRONT
ROW-L

NORMAN
DON
DELORES
JOHNNY

Williams Home - Nelson Bar Rd - built 1908, burned in 2000

YHHS Archives #P0049
www.yankeehillhistory.com



YHHS Archives #P0050
www.yankeehillhistory.com