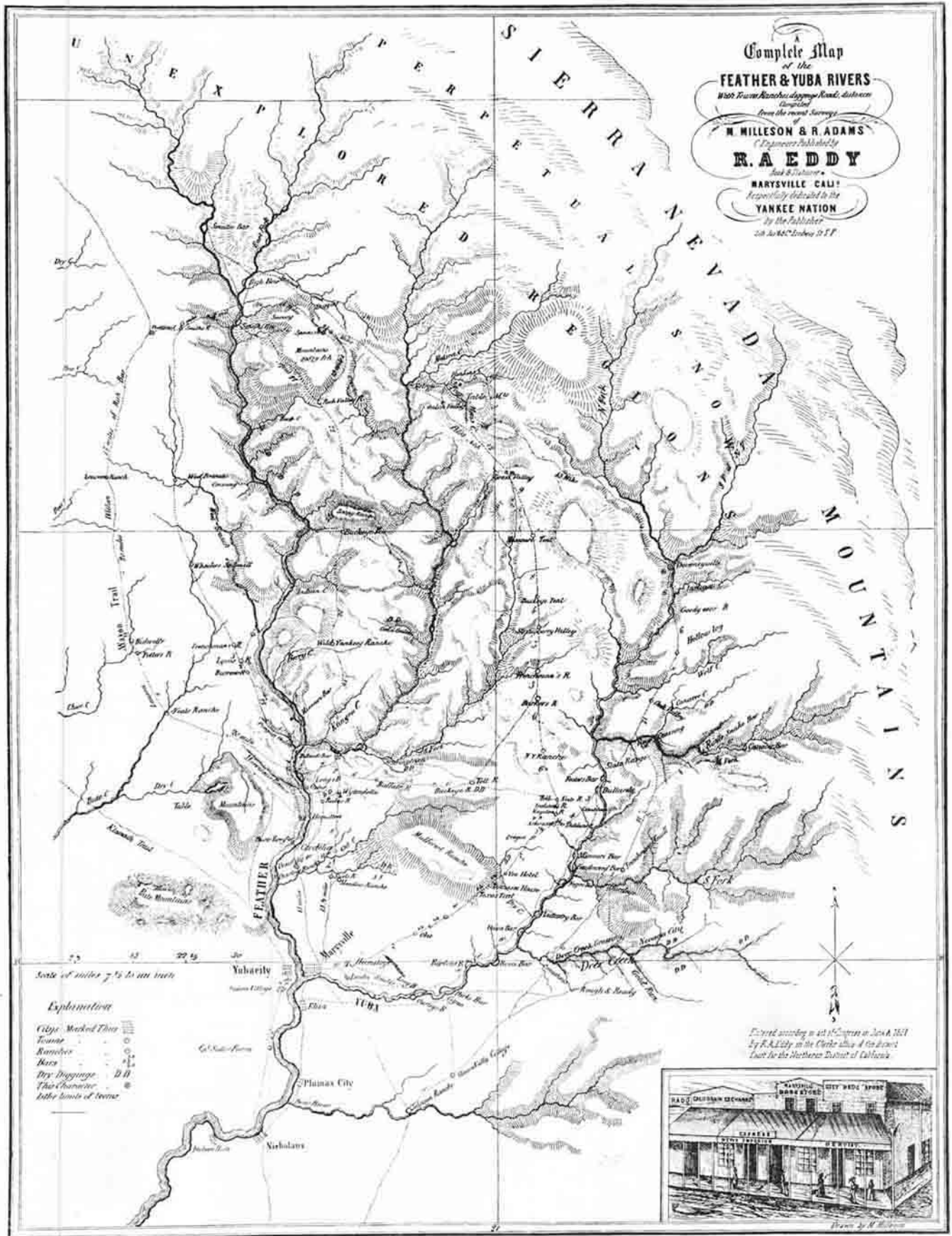


CENTRAL CALIFORNIA IN 1848.

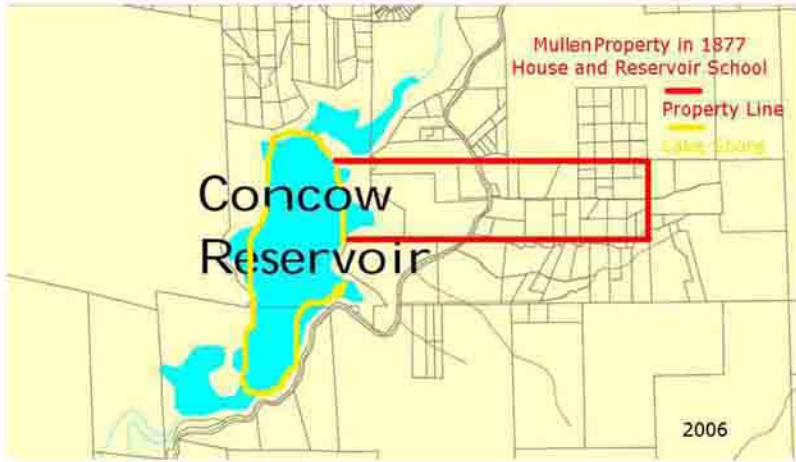
Bancroft Map - History of California

YHHS Archives # P0001

www.yankeehillhistory.com



Earliest Map of Feather River area printed in Marysville in 1851



2006 Property Map with overlay from 1877



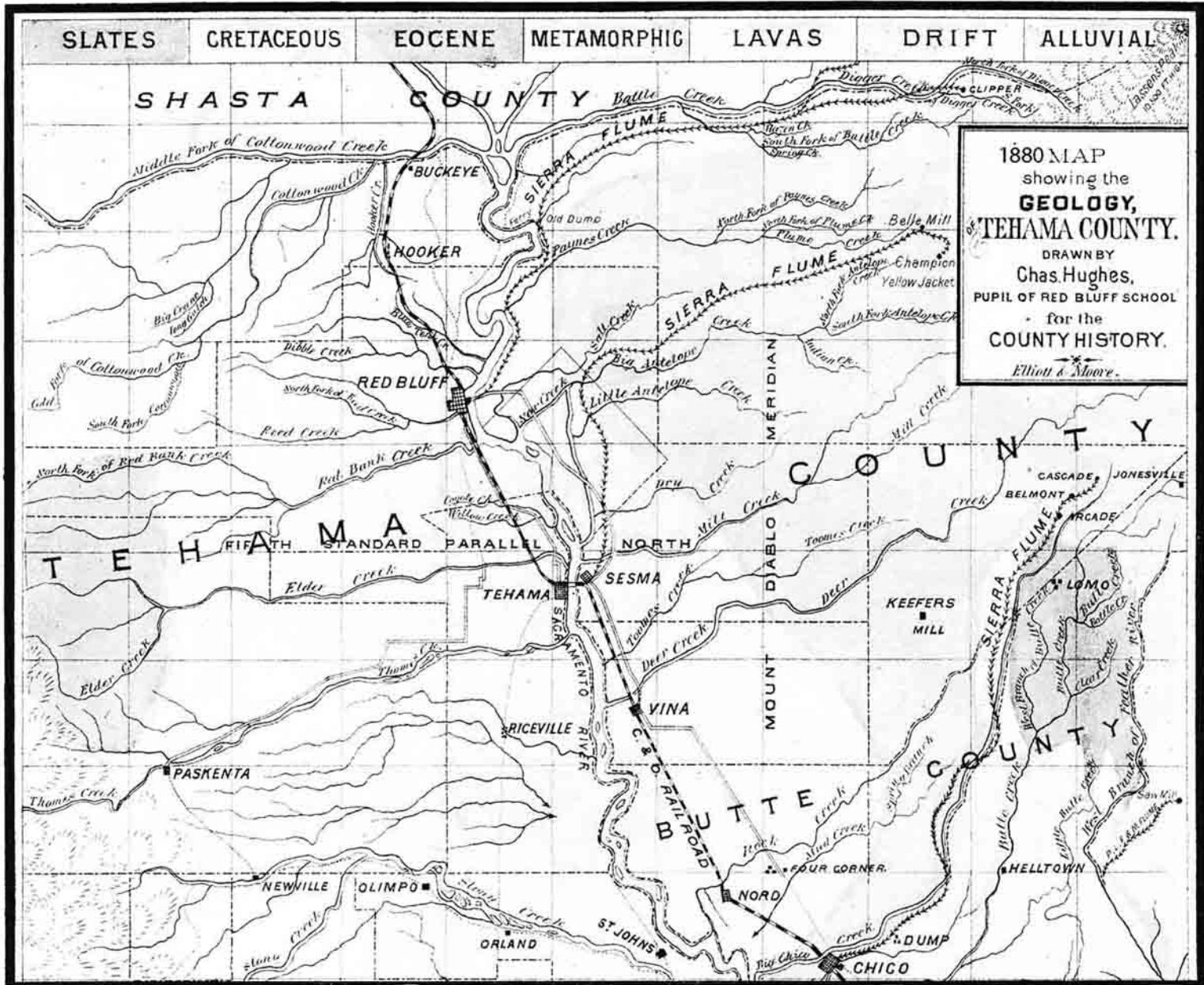
Mullen farm 1858 -1886 (Concow hotel)
Built approx 1871 - Burned 1899

1877 Butte County Map



Reservoir School established 1880
Essie (Grubbs) Mooney Teacher (circa 1910)

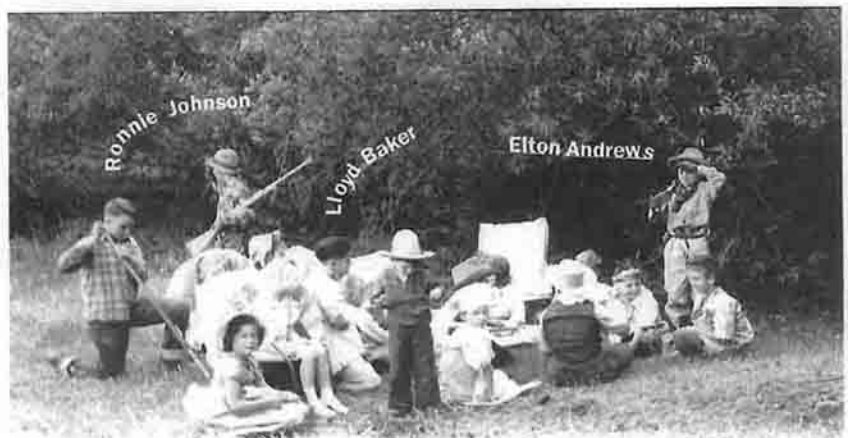


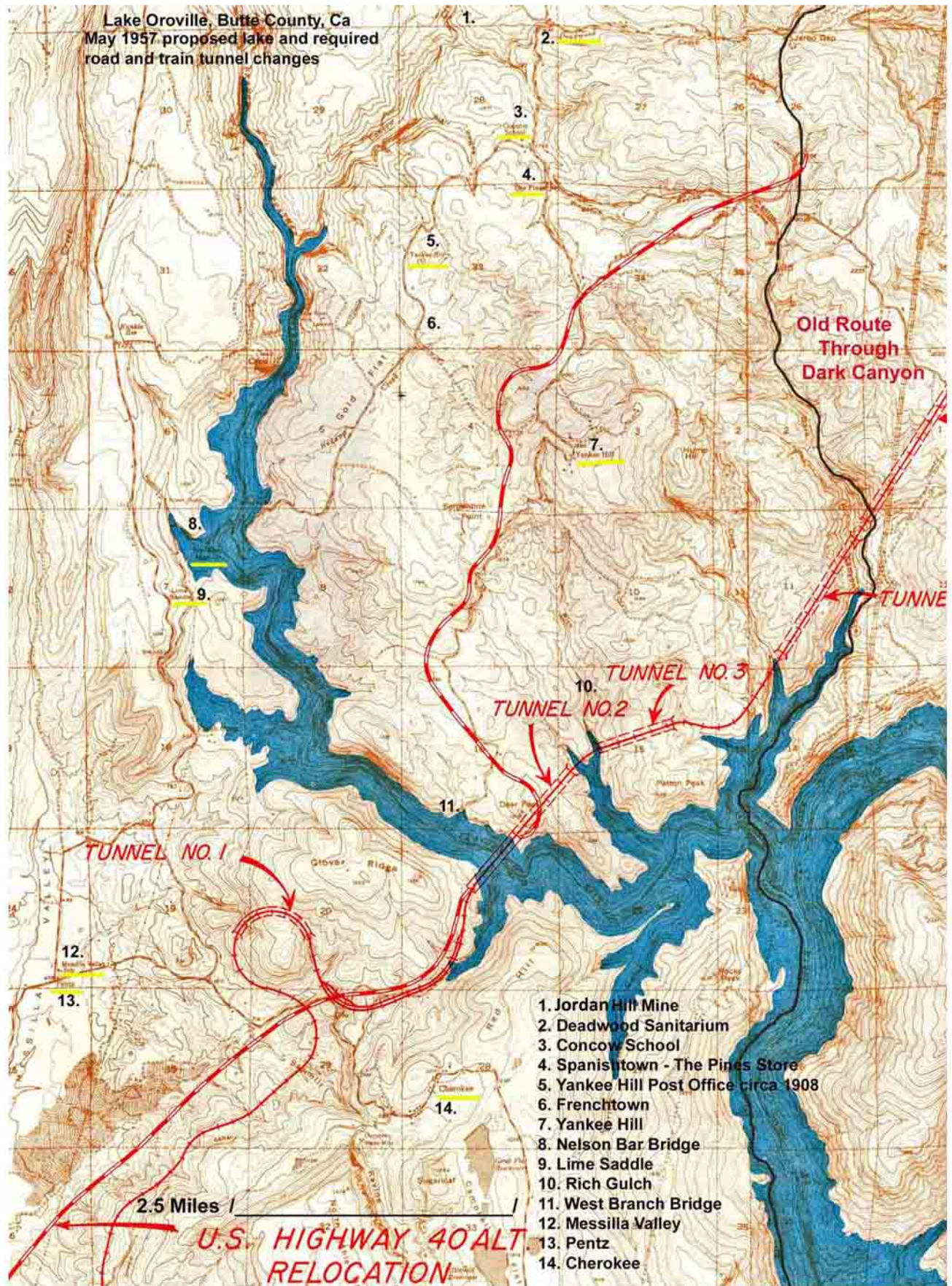




Frontier Days
at Messilla Valley School
Pentz, California

Taken about 1942-43
Class of Elton Andrews,
Grandson of George Welsh
Owner of Durban Place
on Dry Creek





YHHS Archives #P0006
www.yankeehillhistory.com



Yankee Hill

1965

School in back
top right photo

YHHS Archives #P0007
www.yankeehillhistory.com



Back row-Rhonda Evans, Oliver Lunt, Lena Hendricks, Grover Evans, Miss May Moak, Vern Chrogan, Lewis Thomas.
 Front row-Johnny Evans, Ralph Miller, Johnny Miller, Oreley Chrogan, Bertha Chrogan, Susie Miller, Charlie Chrogan.
 Concow School-1901.



Back row: Milo Moore, Ray Moore, Tobe Moak, Bertis Shelters.
 Center row: Fred Croghan, Naomi Moore, Ira Rowe.
 Front row: Don Shelton, Eddie Brown, Betty Barton, Maxine BBrown, Harold Moore, Ralph Moore.
 Concow School 1930.



Ed Gallagher, area logger. Early 1900's.



Benjamin Jarbo



Jim Smith, Oliver Lunt's
uncle and Indian partner



Pancho Beavers



Feather River Canyon
above Big Bend, 1905



Hospital at Camp 6 along
Highway 70



Big Bar school, Pulga.



Early Big Bar school attended by Mrs. Batchelor, Kings, Woods and Gramps.



Feather River above Las Plumas Powerhouse.



Concow School 1931



Las Plumas School. Feather River Canyon. Now covered by waters of Oroville Dam.



Big Bend School



Oregon City School 90

YHHS Archives #P0011
www.yankeehillhistory.com



YHHS Archives #P0012
www.yankeehillhistory.com



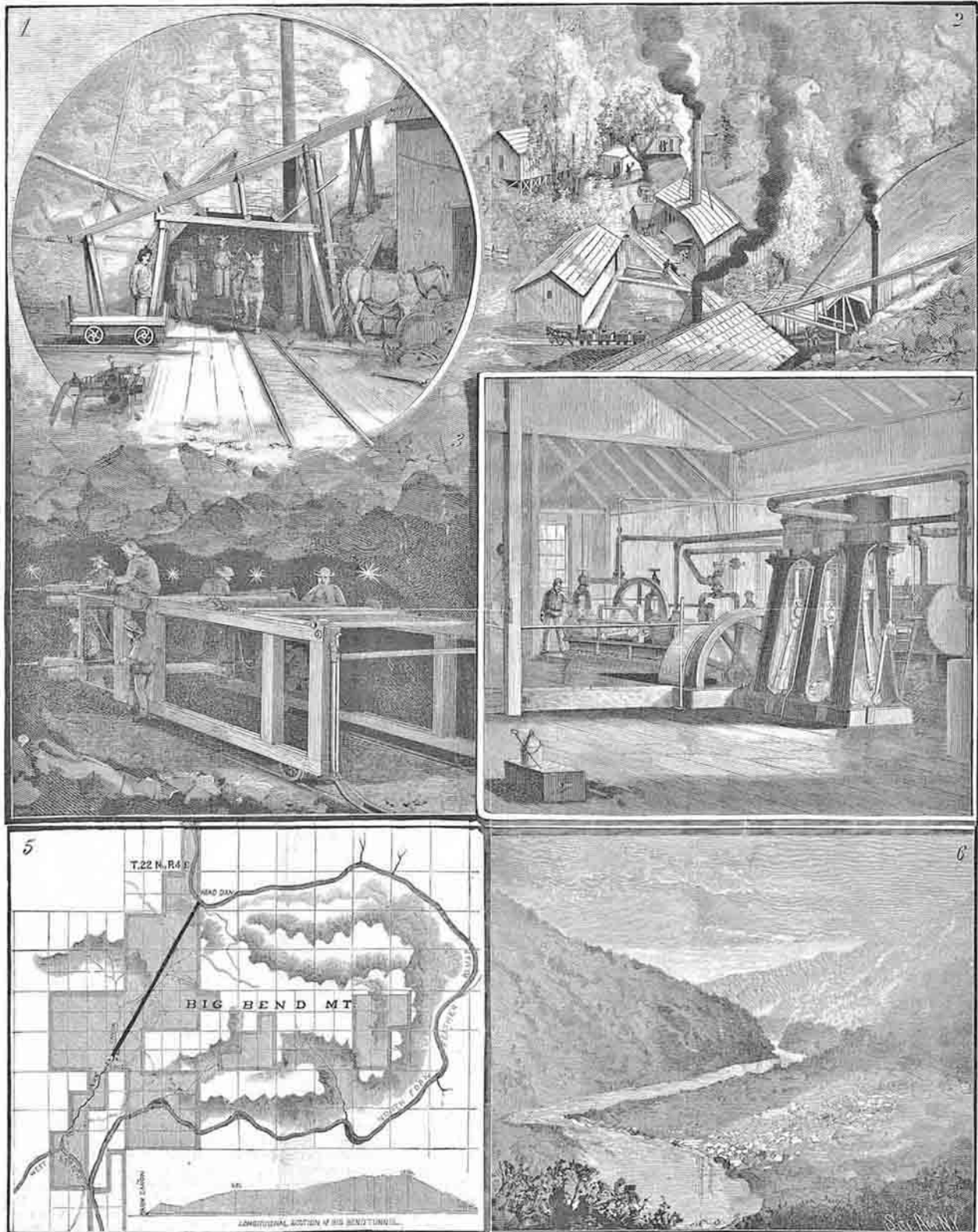
Belden Cemetery 2011 (hotel in background)

YHHS Archives #P0013
www.yankeehillhistory.com



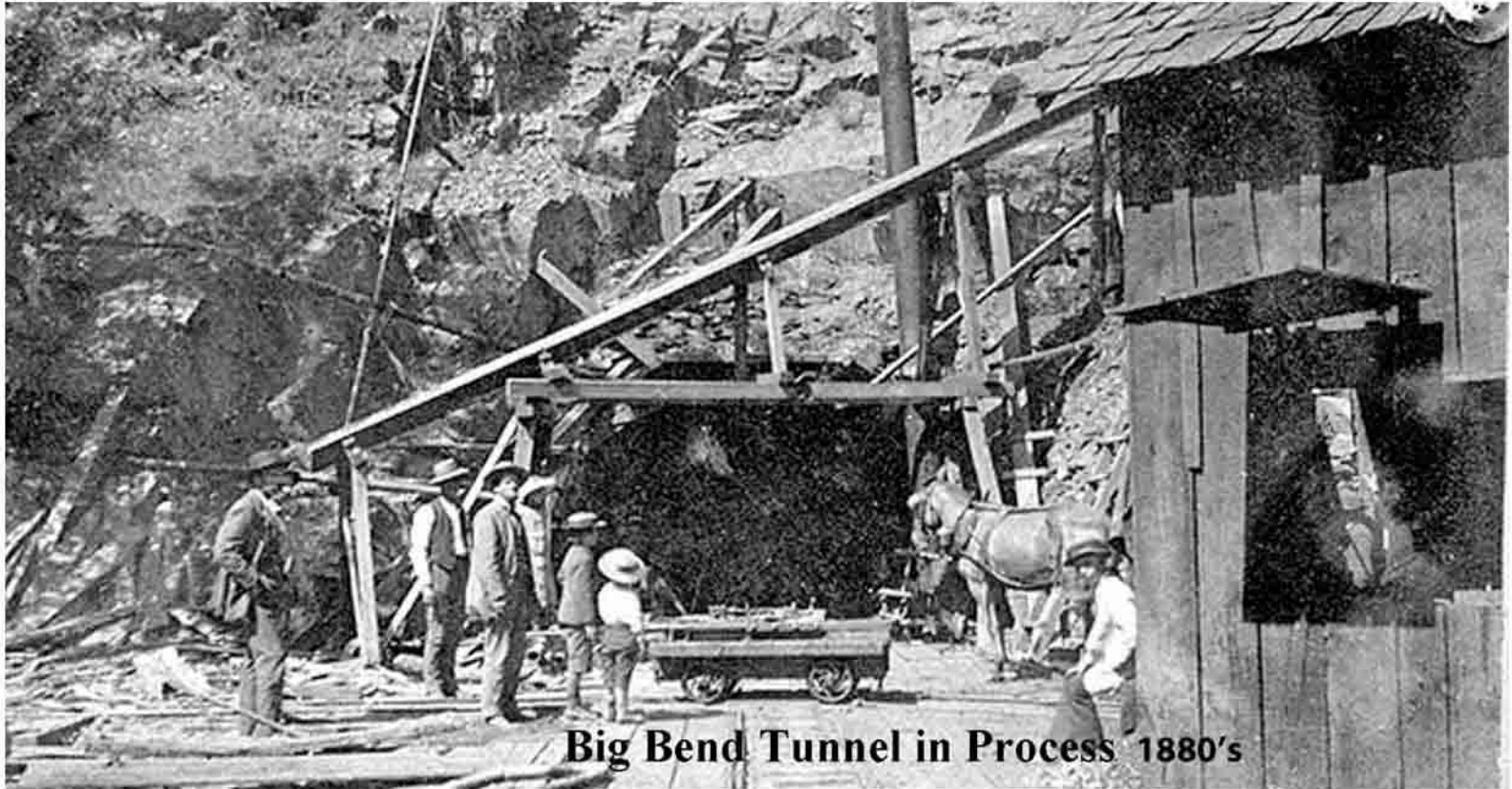
Belden Cemetery Across Highway 70 From Belden Hotel

YHHS Archives #P0014
www.yankeehillhistory.com



1. Entrance of Tunnel. 2. Buildings and Plant in Dark Cañon. 3. Drill Cottage. 4. Air Compresses. 5. Map of Big Bend and Line of Tunnel. 6. View of Island Bar, Feather River.

THE BIG BEND TUNNEL IN BUTE COUNTY, CALIFORNIA.—[See page 85.]



Big Bend Tunnel in Process 1880's

YHHS Archives #P0016
www.yankeehillhistory.com



Cabin At Flea Valley



Dixie Johnson Cabin

YHHS Archives #P0017
www.yankeehillhistory.com



Paradise Cemetery

YHHS Archives #P0018
www.yankeehillhistory.com

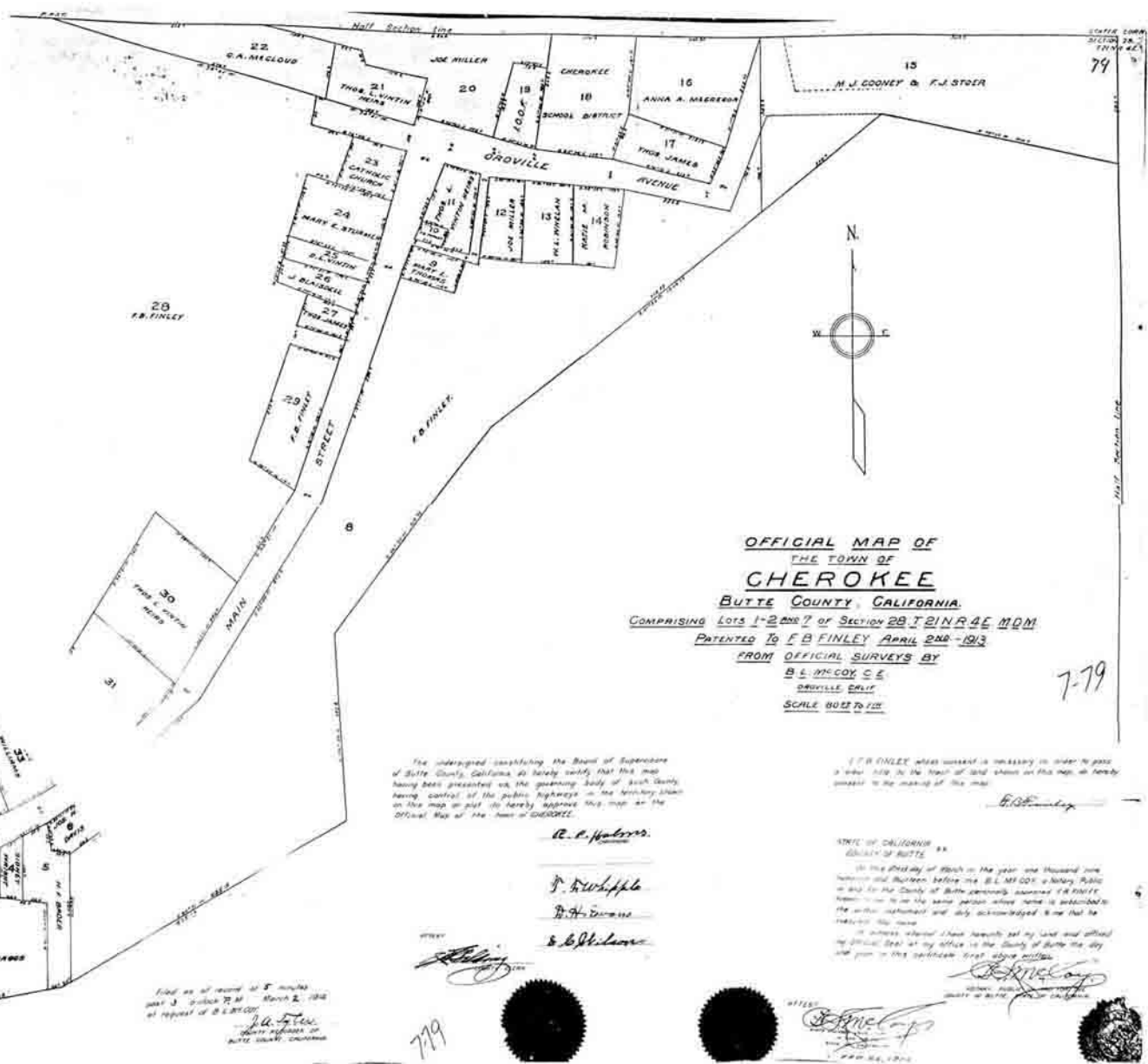
Old Campbell Cow Camp on Flea Mountain

Just as it has for the last one hundred plus years, the wind blows across Flea mountain, rustling through the pines, shaking loose a few dried pine needles to land on the weathered, hand split shingles that cover the outside walls and roof. Most of the wavy glass panes are gone from the windows, allowing the wind to deposit some of the needles inside, on the few remaining rough cut pine floor boards. The only residents now of the aged cabin, are the mice and rats that gather the needles to make their nests in the clapboard cabinet, still barely hanging on the wall, next to where the wood stove once stood. Many of the hand forged square nails still protrude from the walls where they may have held other shelves or provided a place to hang coats and hats. From the claw marks, it looks as though a bear may have taken shelter from the elements numerous times, and ripped things apart.... probably years ago, when the faint smells of spilled food and bacon grease still lingered. Now the aging structure relies on the pine tree to remain standing, but the heavy winter snows will undoubtedly take their toll, and soon only the mountain winds will evidence those thing that were...

Bob Saville



YHHS Archives #P0019
www.yankeehillhistory.com



**OFFICIAL MAP OF
THE TOWN OF
CHEROKEE
BUTTE COUNTY, CALIFORNIA**
 COMPRISING LOTS 1-31 AND 7 OF SECTION 28 T21N R4E MDM
 PATENTED TO F.B. FINLEY APRIL 2ND 1913
 FROM OFFICIAL SURVEYS BY
 B. L. MCGOY & C. E.
 OROVILLE CALIF.
 SCALE 80:2 TO 1 IN.

7-79

The undersigned constituting the Board of Supervisors of Butte County, California, do hereby certify that this map having been presented to the governing body of such County having control of the public highways in the territory shown on this map and do hereby approve this map as the Official Map of the town of CHEROKEE.

R. C. Johnson
J. K. Apple
B. H. ...
S. G. ...

F.B. FINLEY when consent is necessary in order to pass a vote 1/23 to the North of said town on this map, do hereby consent to the making of this map.

F.B. Finley

STATE OF CALIFORNIA
 COUNTY OF BUTTE
 On this 22nd day of March in the year one thousand one hundred and thirteen before me B. L. MCGOY a Notary Public in and for the County of Butte personally appeared F. B. FINLEY known to me to be the same person whose name is subscribed to the within instrument and who acknowledged to me that he executed the same.

In witness whereof I have hereunto set my hand and official seal at Oroville, Calif. in my office in the County of Butte the day and year in this certificate first above written.

B. L. McGoy
 Notary Public
 County of Butte, California

Filed as of record of 5 minutes
 at 3 o'clock PM of March 2, 1913
 at request of B. L. MCGOY
B. L. McGoy
 County Recorder of
 Butte County, California

779

Cherokee 1913

7-79

YHHS Archives #P0020
www.yankeehillhistory.com

Clark family home Pinkston Canyon, Yankee Hill

1. John Clark 2. Arilee Rashe Clark 3. Ida Rashe Clark 4. Marion Clark 5. Unknown 6. Bill Hansen 7. Alred Leslie
8. Banne Pettys Hanson, 9. Dysa Clark 10. Tena Clark Leslie 11. Edna Cassener 12. George Clark 13. Eldridge Petteys
14. Wayne Petteys 15. Rachel Cassener Petteys 16. Hazel Petteys 17. unknown 18. Belle Cassener



YHHS Archives #P0021
www.yankeehillhistory.com



Concow Creek and 1870's Ditch Below Dam

YHHS Archives #P0022
www.yankeehillhistory.com



YHHS Archives #P0023
www.yankeehillhistory.com



YHHS Archives #P0024
www.yankeehillhistory.com



Concow Dam 2007

YHHS Archives #P0025
www.yankeehillhistory.com