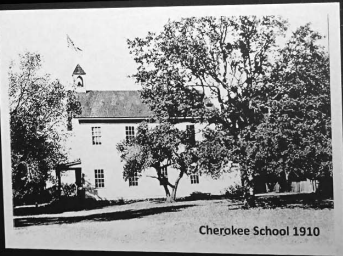
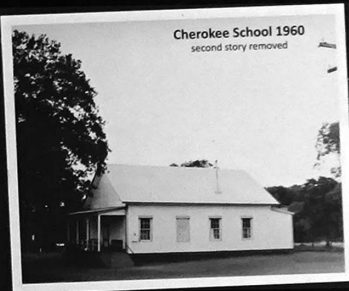




First Cherokee School 1865



Cherokee School 1910



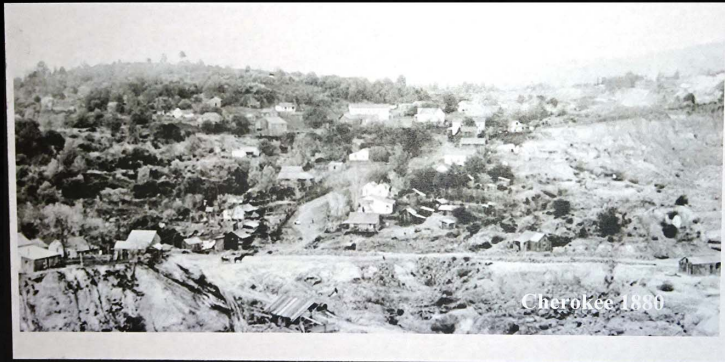
Cherokee School 1960
second story removed



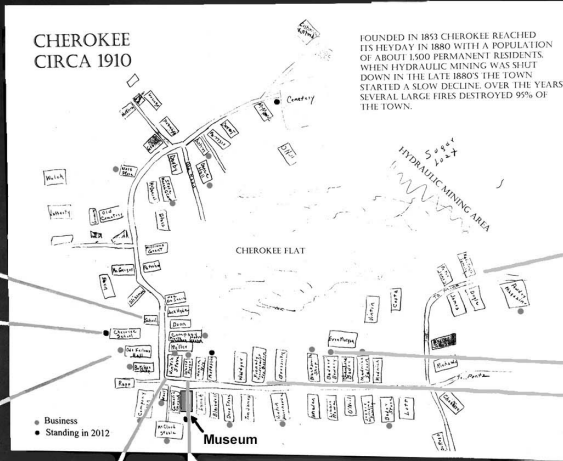
Cherokee School 1887



Cherokee Home 1865



Cherokee 1880



CHEROKEE
CIRCA 1910

FOUNDED IN 1857 CHEROKEE REACHED ITS HEYDAY IN 1880 WITH A POPULATION OF ABOUT 1500 PERMANENT RESIDENTS. WHEN HYDRAULIC MINING WAS SHUT DOWN IN THE LATE 1880'S THE TOWN STARTED A SLOW DECLINE OVER THE YEARS SEVERAL LARGE FIRES DESTROYED 95% OF THE TOWN.

■ Business
● Standing in 2012

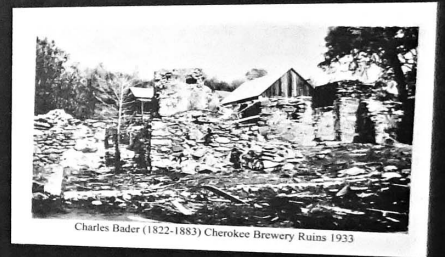
Museum



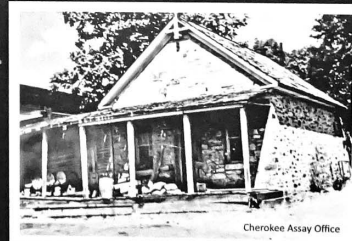
1882 President Hayes (far left) and Gen Bidwell (far right)



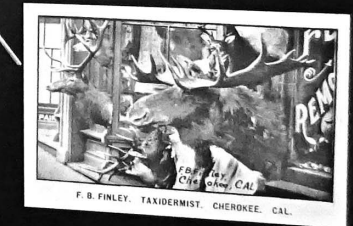
Charles Bader (1822-1883) Cherokee Brewery Ruins 1933



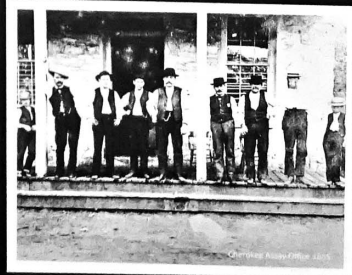
Vinton Store Assay Office



Cherokee Assay Office



F. B. FINLEY, TAXIDERMIST, CHEROKEE, CAL.



Cherokee Home 1865